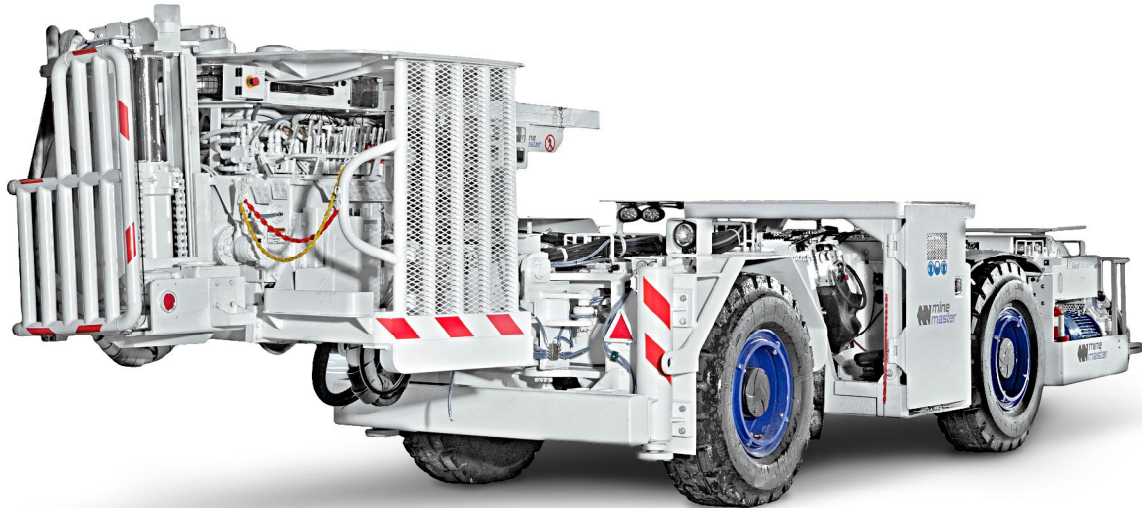


Mine Master Ltd.

Wilków, ul. Dworcowa 27
59-500 Złotoryja
tel.: 76 877 81 01, fax: 76 878 41 01

info@minemaster.eu
www.minemaster.eu



Roof Master 1.7

Low profile roof bolter

- Rotary drilling incorporating dry drilling with dust collection
- Stackable drilling system enables holes of between 25 to 38 dia. to be drilled up to 25m depth (depending on drilling and strata conditions)
- 5m straight line drill coverage
- „Man in Position” drilling system – locates the operator close to the drilling and bolting operations and is protected by an MSHA
- Cetrified hydraulic canopy
- Minimum tramming height: 1.7m
- Ergonomic, fully adjustable operator’s seat with suspension.
- Reliable hydraulic controls – ensuring low operating costs and high performance
- Diesel powered articulated chassis with permanent 4-wheel drive
- Fail-safe, wet multi-disc service brakes with additional fail-safe emergency-parking brake

Roof Master 1.7

Low profile roof bolter

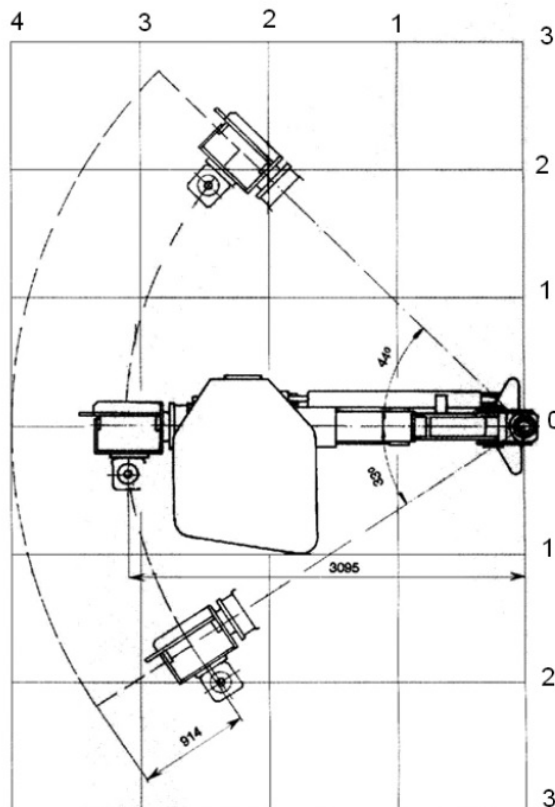


Main components

- Fletcher Heavy duty rotary rock drill
- Fletcher telescopic boom
- Cummins diesel engine
- Tyres 14.00 x 24
- Operator's Protection canopy
- Typical installed power – 30kW
- Mast Titan A with hydraulic drill guide
- Dana Off-Highway Powershift Transmission
- Dana Off-Highway Drive Axles
- Fire suppression system
- Trimming and working lights
- Hydraulic gear pump
- Certified dust collection system

Options

- Air conditioning (air curtain) for drilling (when on electrical power)
- Electric cable reel with electric cable
- Automatic centralized lubrication system
- Fire detection system
- Additional recirculation independent hydraulic filtration system for both trimming and drilling systems
- Voltage – to suit customer's requirements
- Wet drilling or Wet/Dry drilling



Weight and dimensions

Weight	18 000 kg
Length	10 500 mm
Width	2 400 mm
Min. height	1 700 mm
Min. seam width	3 850 mm
Turning radius	
Outer	6 m
Inner	3.6m
Grade ability	15°
Cross-grade	8°
Boom extension	914 mm
Boom lift	+21/-5°
Boom swing	
left	33°
right	44°
Mast rotation	+/-90°